

How Sweden is governed

National level

Legal frameworks and regulations

County councils

21 counties.

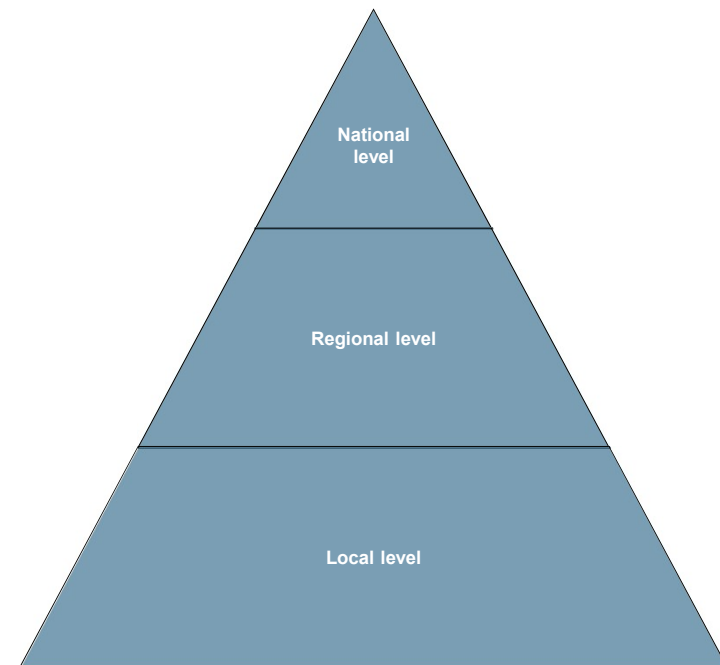
Responsible for health care and medical care.

Local level

290 municipalities

Responsible social services

(child protection and family support),
schools, preschools



Legal frameworks and policies

Bans on corporal punishment in all settings 1979

Investigate the crime - Police department

Assess the child's needs – Social services, child protection services

Legal responsibility for employees to report concern for a child's welfare

New legislation: Violation of a child's integrity

Increased protection against honour-related violence and oppression

National strategy to prevent and combat violence against children

National strategy to prevent and combat violence against children
inquiry proposal to be presented by December 2022

Success stories –National Competence Centre Barnafrid at Linköping university

- Governmental assignment to disseminate evidence-based knowledge and to facilitate multisectoral capacity building among professionals
- Provides sustainably, systematically, on a large scale
 - Training (e.g., e-learning, university-level courses)
 - Barnafrid Talks, Inspirational Talks, webinars
 - Networks (e.g., barnahus, CAMHS, child protection teams, schools, social services)
 - Research and development projects
 - Biannual Barnafrid Conference
- Broad collaborations nationally and internationally, partner in several EU projects
- Good reach and evaluated impact

WEBBUTBILDNING

Basprogram om våld mot barn och unga

Här får du grundläggande kunskaper om hur våld kan drabba barn och unga och hur du ska agera när du upptäcker våld.

Gå till utbildningen



Challenges based on serious case reviews

1. Strengthen the implementation of existing regulations and support material
 - E.g. Conduct disorder is neither examined nor treated
2. Strengthen cooperation on individuals
 - E.g. Severe psychiatric conditions are not adequately assessed and treated
3. Develop working methods
 - E.g. contact with healthcare ceases despite a need for continued care

